

Double seat seesaw on spring VH102D

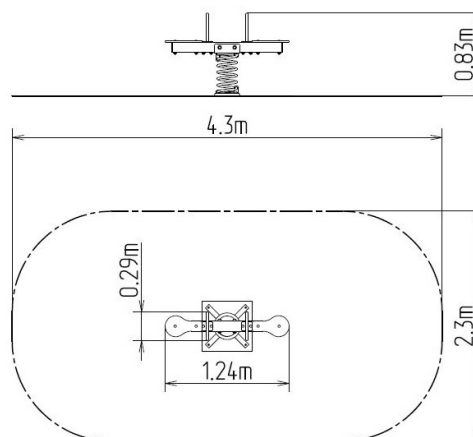
Product type VH-102D-10

Basic information

Age category	2 - 10 years
Minimum area	4,3 m x 2,3 m
Equipment measurements	1,24 m x 0,29 m x 0,83 m
Free fall height:	1 m
Load capacity:	108 kg
Max. number of users:	2
Fall zone: EN 1177	null
Designation:	exterior
Availability of spare parts:	supplied by the
Certificate of Compliance:	ČSN EN 1176 - 1, 6

Material

Wooden units - thick glued wooden supports
 Metal units - structural steel
 Seats - HPL
 Spring - special spring steel



Finish

null
 null
 null

Description

The seesaw beam is made from a glued wooden support and is secured to the support springs. This solution ensures maximum protection against cracking, which is common for products made from solid wood. The wooden supports are impregnated and coated with a triple layer of lacquer, which meets the terms and conditions of the EN71/3 Standard (safe for children's toys). The springs are made from special spring steel and are KOMAXIT powder coated.

The seats are made from HPL (High-pressure laminate, which is characterised by high colour stability and water resistance).

The handles are zinc coated and KOMAXIT powder coated steel. The swing is constructed with durability and long life in mind. Impacts are dampened by rubber bumpers. All fastening material is galvanized or stainless steel.