

## Double seat seesaw on spring VH102KR - red

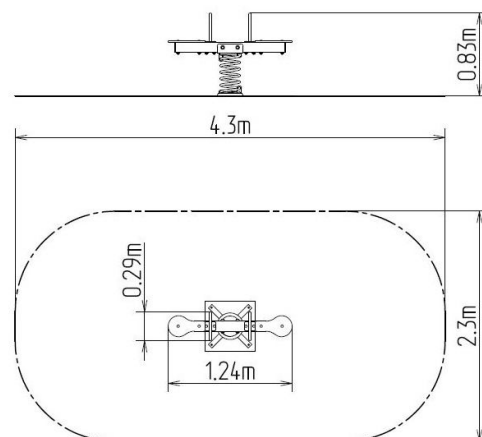
Product type VH-102KR-10

### Basic information

Age category	2 - 10 years
Minimum area	4,3 m x 2,3 m
Equipment measurements	1,24 m x 0,29 m x 0,83 m
Free fall height:	1 m
Load capacity:	108 kg
Max. number of users:	2
Fall zone: EN 1177	null
Designation:	exterior
Availability of spare parts:	supplied by the
Certificate of Compliance:	ČSN EN 1176 - 1, 6

### Material

Metal units - structural steel  
 Seats - HPL  
 Spring - special spring steel



### Finish

Duplex powder coated with coat curing  
 Hot-dip galvanizing

### Description

The seesaw beam is made from structural steel, which is zinc coated or duplex powder coated with coat curing according to RAL to prevent corrosion and is secured to the support spring. The spring is made from special spring steel and are duplex powder coated with coat curing according to RAL to prevent corrosion.

The seats are made from HPL (High-pressure laminate, which is characterised by high colour stability and water resistance).

The handles are zinc coated or duplex powder coated with coat curing according to RAL to prevent corrosion. The swing is constructed with durability and long life in mind. Impacts are dampened by rubber bumpers. All fastening material is galvanized or stainless steel.