

Skill trail SD111KW - brown

Product type SD-111KW-10

Basic information

Age category	2 - 10 years
Minimum area	4,6 m x 3,4 m
Equipment measurements	1,55 m x 0,35 m x 0,42 m
Free fall height:	0,6 m
Load capacity:	162 kg
Max. number of users:	3
Fall zone: EN 1177	null
Designation:	exterior
Availability of spare parts:	supplied by the
Certificate of Compliance:	ČSN EN 1176 - 1, 11

Material

Metal units - structural steel
Plastic units - HDPE

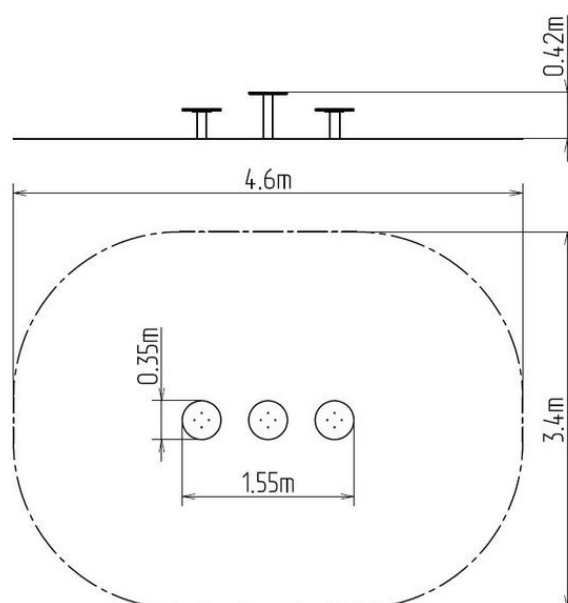
Finish

null
null

Description

The support structure of the skill path is made of structural steel with a diameter of 89 mm which is protected against corrosion by zinc coating, resulting in a very prolonged service life of the workout elements, and coating with baked paint KOMAXIT according to the RAL colour system. These structures are embedded in a concrete base. All other metallic elements are also zinc coated and treated with baked paint KOMAXIT according to the RAL colour system.

All step boards are made of high quality HDPE (high-pressure, full-coloured polyethylene, which is characterised by high colour stability, UV resistance and mainly safety because it is rigid and there is no risk of injury caused by sharp broken fragments). All connecting material is zinc or stainless steel coated.



Equipment

We offer three color variants of the support structure - red, blue and brown.