



## UNIVERSAL 4U225KS - silver

Product type 4U-225KS-15

### Basic information

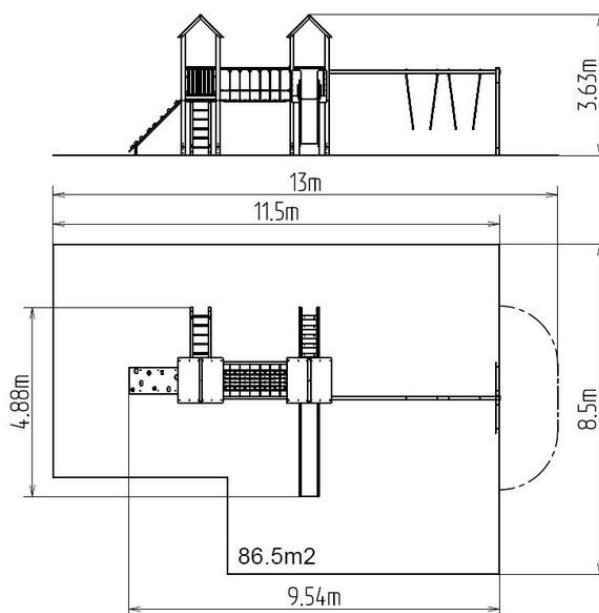
Age category	3 - 15 years
Minimum area	13 m x 8,5 m
Equipment measurements	9,54 m x 4,88 m x 3,63 m
Free fall height:	1,5 m
Load capacity:	972 kg
Max. number of users:	18
Fall zone: EN 1177	null, 86,5 m <sup>2</sup>
Designation:	exterior
Availability of spare parts:	supplied by the
Certificate of Compliance:	ČSN EN 1176 - 1, 2, 3

### Material

Platform - HPL  
 Metal units - structural steel  
 Plastic units - HDPE, polyamide  
 Slide - fibreglass  
 Ropes and nets - polypropylene with a steel internal core  
 Climbing holds - mix of silica sand and epoxy resin  
 Roofs - HPL

### Finish

Duplex powder coated with coat curing  
 Hot-dip galvanizing



### Description

The support structure of the tower unit is made of structural steel which is protected against corrosion by zinc coating, resulting in a very prolonged service life or duplex powder coated with coat curing according to RAL to prevent corrosion. All other metallic elements are also zinc coated or duplex powder coated with coat curing according to RAL to prevent corrosion.

The slide is made from fibreglass. The surfaces of the slides, steps, etc. are made from high quality HDPE plastic (high density coloured polyethylene, which is characterised by high colour stability, UV resistance but mainly safety as it doesn't break and therefore there is no danger of injury to children by sharp fragments). The rope bridge is made using HERKULES material (16 mm thick ropes made from polypropylene with a steel internal core) and is connected with plastic or aluminium joints. The platforms and the sloping climbing wall are made from HPL (High-pressure laminate, which is characterised by high colour stability and water resistance). The climbing holds are made from the mix of silica sand and epoxy resin, which ensures long life, colour preservation as well as skin friendly surface. The roofs are made from HPL (High-pressure laminate, which is characterised by high colour stability, UV resistance and water resistance). All fastening material is galvanized or stainless steel.

### Equipment

2x tower, slide, 2x A-shaped roof, metal beam, sloping ramp with steps and metal handles, sloping ladder with metal steps, rope bridge, sloping climbing wall with climbing holds, 2x barrier from HDPE.