



UNIVERSAL 4U253KW - brown

Product type 4U-253KW-10

Basic information

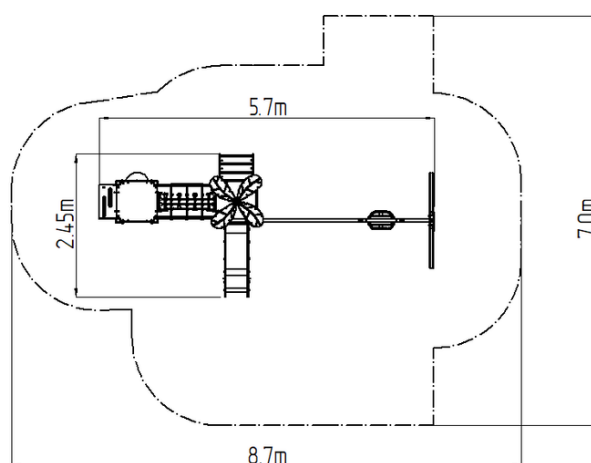
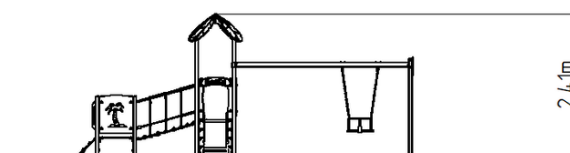
| | |
|----------------------------|--|
| Age category | 1 - 10 years |
| Minimum area | 8,7 m x 7 m |
| Equipment measurements | 5,7 m x 2,45 m x 2,41 m |
| Free fall height: | 0.6 m |
| Max. number of users: | 11 |
| Fall zone: EN 1177 | null |
| Certificate of Compliance: | ČSN EN 1176-1 ed.2 +A1:2024 ČSN EN 1176-2 ed.2:2018 ČSN EN 1176-3 ed.2:2018 ČSN EN 1176-11:2015 |

Material

Metal parts - structural steel
Plastic parts - HDPE, polyamide
Slide - stainless steel
Ropes and nets - polypropylene with a steel internal core
Platforms - HPL
Apertures - Plexiglass
Seat - rubber with an aluminum insert

Finish

Duplex powder coated with coat curing
Hot-dip galvanizing



Description

The support structure of the tower unit is made of structural steel which is protected against corrosion by zinc coating, resulting in a very prolonged service life or duplex powder coated with coat curing according to RAL to prevent corrosion. All other metallic elements are also zinc coated or duplex powder coated with coat curing according to RAL to prevent corrosion.

The slide is made from stainless steel. The surfaces of the slides, barriers, etc. are made from high quality HDPE plastic (high density coloured polyethylene, which is characterised by high colour stability, UV resistance but mainly safety as it doesn't break and therefore there is no danger of injury to children by sharp fragments). The rope bridge is made using HERKULES material (16 mm thick ropes made from polypropylene with a steel internal core) and are connected with plastic or aluminium joints. The platform and the ramp are made from HPL (High-pressure laminate, which is characterised by high colour stability, UV resistance and water resistance). The swing is hung on a metal girder using galvanized chains. The seat is made of rubber and is reinforced with an aluminum insert. The chains are stainless steel, resulting in a very prolonged service life of the product. All fastening material is stainless steel.

Equipment

2x Tower, slide, roof in the shape of a leaf, sloping ramp with steps and HDPE handles, sloping ramp with HDPE steps, 2x barrier, rope bridge, barrier with an aperture, BABY seat.