

Double seat seesaw on spring VH102KS - silver

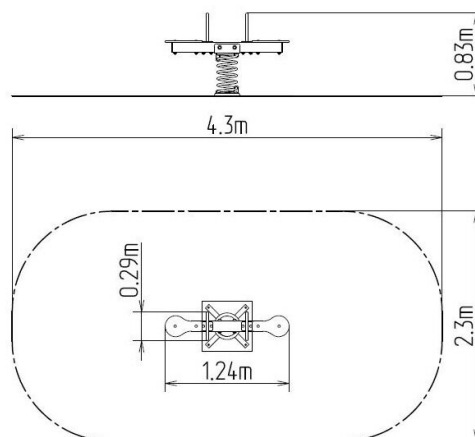
Product type VH-102KS-10

Basic information

Age category	2 - 10 years
Minimum area	4,3 m x 2,3 m
Equipment measurements	1,24 m x 0,29 m x 0,83 m
Free fall height:	1 m
Load capacity:	108 kg
Max. number of users:	2
Fall zone: EN 1177	null
Designation:	exterior
Availability of spare parts:	supplied by the
Certificate of Compliance:	ČSN EN 1176 - 1, 6

Material

Metal units - structural steel
Seats - HPL
Spring - special spring steel



Finish

null
null

Description

The seesaw beam is made from structural steel, which is zinc coated and KOMAXIT powder coated according to the RAL colour chart and is secured to the support spring. The spring is made from special spring steel and are KOMAXIT powder coated. The seats are made from HPL (High-pressure laminate, which is characterised by high colour stability and water resistance). The handles are zinc coated and KOMAXIT powder coated steel. The swing is constructed with durability and long life in mind. Impacts are dampened by rubber bumpers. All fastening material is galvanized or stainless steel.