

## Courage trail LP201KB-Q - blue (Coastal region)

Product type LP-201KB-10-Q

### Basic information

Age category	2 - 10 years
Minimum area	6,3 m x 6,5 m
Equipment measurements	3,3 m x 3,47 m x 1,3 m
Free fall height:	0,9 m
Load capacity:	540 kg
Max. number of users:	10
Fall zone: EN 1177	null
Designation:	exterior
Availability of spare parts:	supplied by the
Certificate of Compliance:	ČSN EN 1176 - 1, 11

### Material

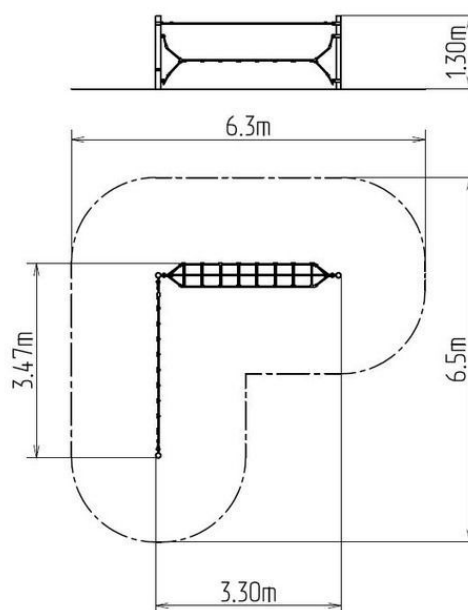
Metal units - structural steel  
Ropes and nets - polypropylene with a steel internal core  
Plastic units - polyamide

### Finish

Duplex powder coated with coat curing  
Hot-dip galvanizing

### Description

The support structures of the rope unit are made from structural steel with a diameter of 89 mm, they are zinc coated and KOMAXIT powder coated according to the RAL colour chart and fixed in a concrete bed. The support structures can be hot-dip galvanized should the client require. The ropes are made using HERKULES material (16 mm thick ropes made from polypropylene with a steel internal core) and are connected with plastic joints. The clamps are stainless steel. All fastening material is stainless steel.



### Equipment

We offer three color variants of the support structure - red, blue and brown.